



# The Evangel

## Our Saviour

### Lutheran Church

is a congregation of the Indiana-Kentucky Synod of the Evangelical Lutheran Church in America.

We welcome all to share in life with Christ as a community of faith in mission.

### OSLC's Vision & Mission

God calls us to be a community of discipleship for all, making Christ's love real in our daily lives.

Grow in faith and Christian calling  
Love and serve God and neighbor  
Proclaim the Gospel of Jesus Christ

### Worship on Sundays

9:00 A.M. TRADITIONAL (Online and in-person)

Join the Zoom Meeting or watch live on OSLC's Facebook page.

Email OSLC (info@osluth.org) and you will receive a bulletin and a Zoom invite.



Randy Schroeder, Pastor  
Kristin Rice, Campus Pastor



## Michaela's Confirmation



## Pastor's Letter



### Welcome to the "Ordinary Time!"

Grace, Mercy and Peace to you and your family from our Creator, our Savior Jesus Christ, and our Sustainer the Holy Spirit!!

The season after Pentecost is called Ordinary Time, which begins the day after Pentecost and ends the day before the First Sunday of Advent. The length of Ordinary Time can range from 23–28 Sundays, depending on the date of Easter. The season also includes holidays like Thanksgiving and All Saints. During Ordinary Time, the church focuses on: Witnessing to the world, God's work in bringing about God's kingdom, and the meaning of Sunday. Ordinary Time is also sometimes called the "green season" because green is the usual liturgical color for this period of the church year.



Yet this season is anything but ordinary. This season we find ourselves in a discernment process to welcome the invitation of the Spirit in what God is calling Our Saviour Lutheran Church. How does discernment differ from decision-making?

§ **Decision-making** is our thoughts, our will, and our plan. Examples include:

- Weighing pros and cons
- Logical
- Rational
- Linear
- Trusts our knowledge, resources, and abilities

§ **Discernment**- Ruth Haley Barton defines discernment as an ever-increasing capacity to see the work of God in the midst of the human situation so that we can align ourselves with whatever God is doing. Discernment is a quality of attentiveness to God that, over time, develops our sense of God's heart and purpose in the moment, and communal discernment, we move beyond the personal to see what God is up to within the collective whole.

- Discernment is rooted in what God is doing.
- "The goal of discernment is to tap into the will and movement of the Holy Spirit." Susan Beaumont

As we move forward together as the body of Christ, we are discerning, listening for God's Spirit to guide us to have a better understanding of what God is calling OSLC. I ask you to say a prayer or spend a few minutes each week in contemplation concerning; How will OSLC witness God's love to the community/world? How will God use us in our community to bring about God's Kingdom? This might sound like decision-making... But discernment is inviting God into the process before making the decisions. In our discernment we are listening and asking God to lead us. Any business can make decisions on what the company does. Churches are different. Churches are the communion of the Body of Christ. Our movement forward is (should be) led by the Spirit. Please consider the needs of the community and the gifts and talents of OSLC. Where the need and gifts intersect is a good place to begin as we continue to discern.

Thank you for your partnership in ministry. You are a blessing from God, a blessing to me, OSLC, and PLM.

Peace,  
Pastor Randy.

PS Pints with a Pastor is returning! We will meet at Nine Irish Brothers (119 Howard Ave., West Lafayette, IN 47906) at 6:30pm on Tuesday, June 18<sup>th</sup>. **Please RSVP by Tuesday at noon– by emailing me at [randy@osluth.org](mailto:randy@osluth.org) or giving me a call @ 260-402-4475**, so we know how many tables/much space to reserve.





# News & Notes



## PASTOR'S SCHEDULE

**Wabash Pastoral Leadership Program:**

August 5-7  
October 4-16  
(in Ghana)  
December 2-4

**Synod Assembly:**  
June 7-9

**Vacation:**  
June 24-July 9

### Council Highlights

- **PLM:** Parking permits went on sale on May 6th and have sold all the 12/12 and 24/7 spots have been sold and 8 of the regular passes have been sold. Breaking Bread/Evening Worship will start up again on August 18th with dinner at 5pm and worship at 5:45pm.
- **Property:** Work day was accomplished don April 20th. A lot of cleaning was accomplished, but there are still categories that need to be accomplished. You can find the list of things that need to be done in the Narthex.

### Stewardship

Greetings Good and Faithful Child of God,

Sunday, June 2<sup>nd</sup> we will hear from the **Deuteronomy 5:12-15.**

<sup>12</sup>Observe the sabbath day and keep it holy, as the Lord your God commanded you. <sup>13</sup>Six days you shall labor and do all your work. <sup>14</sup>But the seventh day is a sabbath to the Lord your God; you shall not do any work—you, or your son or your daughter, or your male or female slave, or your ox or your donkey, or any of your livestock, or the resident alien in your towns, so that your male and female slave may **rest as well as you.** <sup>15</sup>Remember that you were a slave in the land of Egypt, and the Lord your God brought you out from there with a mighty hand and an outstretched arm; therefore the Lord your God commanded you to keep the sabbath day.

We know God is a God of abundance and all good gifts come from God. God knows we need rest in order to give from a place of abundance and not exhaustion. Truly, if we are already exhausted, we will not have the reserve to help others when asked. We are to rest on the sabbath and keep it holy to honor God, but it is also important to be good stewards of everything we receive from God. That means we are to be good stewards of the lives we have been given.

As you think about stewardship, have you ever considered rest and the role it plays in your life? Take a look at the Wholeness Wheel to the right. Our rested-ness affects every aspect of our Spiritual Wellbeing. Getting enough rest will improve your relational, emotional, physical, and intellectual wellbeing.

As a step in increasing your overall stewardship, what are you doing to assure you are rested? What ways are you providing rest for your body? Do you get enough sleep at night? When do you feel the most rested? What gives you energy and how can you work that into you daily or weekly routine. This week/month try turning off all the technology and distractions and spend a few moments in silence. If silence isn't your thing, turn on your favorite song and listen to it as you focus on your breathing. Just a few minutes of rest can do wonders in our usual busy lives. Maybe you need rest from silence and desire interaction with others. Go out and socialize. Start a book study. (Ask your pastor for a good book for discussion, I have a few ideas )

Take care of yourself. Get your rest; after all it is Biblical. God loves you and so do so many others.

It is an honor to be part of OSLC as we experience the fullness of God's love in the world. Thank you for all you do, for your continued support of loving and serving God and neighbor. You are appreciated and loved.

Peace,  
Pastor Randy





## Faith Formation May News



### Faith Formation at OSLC-

Our Faith Formation team has been listening and discerning the direction of Faith Formation here at OSLC. Back in March, we adopted a mission statement and guiding principles to help us make decisions and plan for the future of our children’s ministry. I would like to share with you what we have adopted.



### OSLC Faith Formation Mission Statement-

OSLC’s Children’s ministry endeavors to be a fun, safe space where children can learn about God’s love and live into their faith.



### Guiding Principles-

- Children are beloved, accepted, and cherished by God and OSLC.
- We want to create a safe space for children to ask questions and explore their faith.
- Faith is caught more than it is taught. Teachers and leaders will lead by example, showing love and forgiveness and sharing their faith with the children of OSLC.
- Fun, play, and laughter are essential components of faith formation.
- We want our children to know they are loved and valued by the teachers and congregation. Offering opportunities for intergenerational faith formation is a priority.

Facebook-“Like” OSLC’s page for Sunday Worship streamed live, updates and upcoming events:  
<https://www.facebook.com/osluth/>

Out of this discernment and in honor of our mission statement and guiding principles, the Faith Formation team has decided to experiment with using the Godly Play method for our curriculum for the 2024/2025 school year. We feel that Godly Play reflects our vision of faith formation, and we are excited to share it with all of you on June 2<sup>nd</sup> during the special Adult Forum time. If you want to learn more about Godly Play, click the link. <https://www.godlyplayfoundation.org/>.

We will work all summer long to prepare the classroom for Godly Play. As needs arise, I will share them with the congregation. We would love your support and help!

I would like to thank Carol Grady for her passion, interest, and dedication to the new experiment. She has worked very hard to coordinate what we currently have with the Godly Play method. We hope to see you on June 2<sup>nd</sup> and if you have any questions or would like more information, please contact Missy at [missy@osluth.org](mailto:missy@osluth.org) or 260-402-4477.



## Faith Formation May News Continued



### Church Picnic

All are welcome to join us on June 23rd at Columbian Park at 12:00PM for Park Prayer service and eat lunch at 12:20PM. (We will have a 10AM worship at OSLC and invite people to come after worship.) We will be gathering in the Yellow Shelter #3. In honor of our 65th church anniversary, we will have a special prayer service in recognition of our years of ministry before we eat. Carl Behnke is preparing the main meat dish. We are asking that you please bring a dish to share. There is a sign up sheet outside the office to let us know how many in your group plan to attend and what you are bringing, or you can click on the link to use the Signup Genius. [Church Picnic Sign up](#)

Please let us know by June 16th so we can plan accordingly. This event is a great opportunity to invite friends and or neighbors to a fun OSLC activity!

\*\*\*\*\*

### Aviator's Baseball Game Outing

Join us on **July 21st at 3:00 p.m.** for a fun afternoon of fellowship and baseball. We have reserved seating at Loeb Stadium in section 108. Tickets are \$8.00 a piece. OSLC will provide a \$5.00 food voucher with each ticket purchased. Make checks out to OSLC, and in the memo line, write Aviators Baseball. You can place your checks in the offering plate or give them to Erin in the office. **Because the seats are reserved, an RSVP is required.** Please **RSVP (no deadline)** to guarantee a spot with your OSLC family. You can scan the QR code, click this link, [Aviators Baseball Outing](#), or sign up on the sheet outside the office. Please let Missy know if you have any questions at [missy@osluth.org](mailto:missy@osluth.org) or at 260-402-4477.

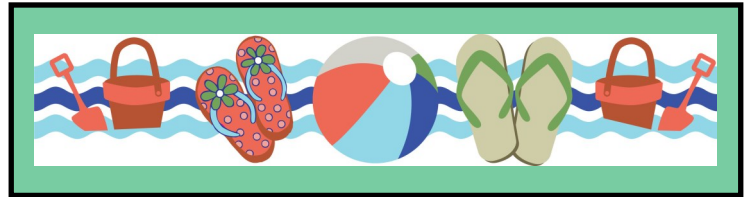





\*\*\*\*\*

### Save the Date!

#### Prophet's Town State Park Outing

On August 11th, you are invited to join us for a fun afternoon at Prophet's Town State Park. We will caravan from the church after the service. We will begin at the farmhouse and barns for a tour, then find a place to have a picnic lunch and end our time at the aquatic center. The cost to get into the park is \$8 a vehicle. Please pack picnic lunches for your group. OSLC will cover the cost of our group getting into the aquatic center. If you have any questions, please contact Missy at [missy@osluth.org](mailto:missy@osluth.org) or 260-402-4477.



| Sunday  | Monday   | Tuesday  | Wednesday  | Thursday  | Friday  | Saturday   |           |       |          |
|---|--|--|--|---|---|--|-----------|-------|----------|
|   |  |  |  |   |   | 1  |           |       |          |
|   |  |  |  |   |    | 8:30 AM Men's Breakfast @ Café Literato<br>9 AM Mom's Group @ Java House (on Meijer Ct.)<br>4 PM OSLC Food, Fun and Game Night |           |       |          |
| 2   | 3  | 4  | 5  | 6   | 7   | 8  |           |       |          |
| 9 AM Worship in-person & Zoom<br>2 PM Women Wine & Feminine Spirituality @ Wildcat Creek                              | 9 AM Centering Prayer via zoom   | 6 PM Pax   | 12pm Luncheon Lectio via zoom  | 7 PM AA   | <table border="1" style="width: 100%;"> <tr> <td style="width: 33%;">June 7-9:</td> <td style="width: 33%;">Synod</td> <td style="width: 33%;">Assembly</td> </tr> </table> |  | June 7-9: | Synod | Assembly |
| June 7-9:   | Synod  | Assembly   |  |   |   |  |           |       |          |
|   |  |  | <b>June 4-15: Erin on</b>  |   | <b>Vacation.</b>  |  |           |       |          |
| 9   | 10   | 11   | 12   | 13  | 14  | 15   |           |       |          |
| 10:00 AM Worship in-person & Zoom<br><b>Synod Assembly</b>  | 9 AM Centering Prayer via zoom<br>6:30pm OSLC Council Meeting via Zoom | 6 PM Pax   | 12pm Luncheon Lectio via zoom  | 7 PM AA   |    |  |           |       |          |
|   |  |  | <b>Erin on Vacation.</b>   |   |   |  |           |       |          |
| 16  | 17   | 18   | 19   | 20  | 21  | 22   |           |       |          |
| 10 AM Worship in-person & Zoom<br> | 9 AM Centering Prayer via zoom   | 6 PM Pax<br>6:30 PM Pints with Pastor @ Nine Irish Brothers (WL) | 12pm Luncheon Lectio via zoom<br> | 7 PM AA<br> |   |  |           |       |          |
| 23  | 24   | 25   | 26   | 27  | 28  | 29   |           |       |          |
| 10 AM Worship in-person & Zoom<br>12 PM Church Picnic   | 9 AM Centering Prayer via zoom   | 6 PM Pax   | 12pm Luncheon Lectio via zoom  | 7 PM AA   |   |  |           |       |          |
| 30  |  |  |  |   |   |  |           |       |          |
| 10 AM Worship in-person & Zoom  |  |  |  |   |   |  |           |       |          |

**Dates OSLC Closed in 2024**

- July 4: Fourth of July
- September 2: Labor Day
- November 28 and 29: Thanksgiving
- December 24 and 25: Christmas
- December 31 and January 1 (2025): New Years



## 9 AM Worship Assistant Schedule for June

| Date    | Cantor         | Assisting Minister | Lector         | Usher          | Assistant to Mike Williams |
|---------|----------------|--------------------|----------------|----------------|----------------------------|
| June 2  | Mark Hermodson | Ainsley Hargus     | Mary Waltmann  | Marcia Daehler | Steve Belter               |
| June 9  | Kathy Heise    | Dick Rahdert       | Kathy Grogan   | Jesse Grogan   | Steve Belter               |
| June 16 | Mark Hermodson | Dick Rahdert       | Bob Nielsen    | Vera Weiser    | Matt Ohland                |
| June 23 | Kathy Heise    | Bob Nielsen        | Mark Hermodson |                | Ted Heise                  |
| June 30 | Mark Hermodson | Kathy Grogan       | Matt Ohland    |                | Jesse Grogan               |

### Preparation for Worship

Lord, you invite us to “observe the Sabbath day and keep it holy” (Deuteronomy 5:12), that we may rest in your care and provision. Thank you, God.

\* \* \*

The first humans hid from you, God, but you longed to walk with them in the cool evening (Genesis 3:8-9). May we eagerly walk with you, here in worship and all day long.

\* \* \*

Psalm 20:7 reads: “Some trust in chariots and some in horses, but we trust in the name of the Lord our God.” May this time of worship help me trust only in you, O Lord.

\* \* \*

May I meet today’s challenges in your name, O God, as David faced Goliath: “I come against you in the name of the Lord Almighty” (1 Samuel 17:45, NIV).

\* \* \*

Jesus, I come to worship with concerns and distractions. Take them and replace them with your easy yoke (Matthew 11:29-30). Amen.

### Words of Welcome

We gather to “sing aloud to God our strength; [to] shout for joy to the God of Jacob” (Psalm 81:1, NRSV). Welcome to worship.

\* \* \*

Welcome to worship and fellowship as the family of God this day. Your presence adds joy to our gathering.

\* \* \*

Happy Father’s Day to all who share a caring relationship with a dad or dad-figure — even as we gather to worship the most loving Father of all, our God of infinite goodness.

\* \* \*

On this first official Sunday of summer, I greet you in the bright, warm love of Jesus! Welcome to worship.

\* \* \*

“The steadfast love of the Lord never ceases, his mercies ... are new every morning” (Lamentations 3:22-23, NRSV). Let us worship our ever-faithful God.



# Abigail's Gratitude and Open House



Dear OSLC Family and Friends:

Thank you so much for the celebration of my Graduation from Jeff High School. The basket was incredible and contained so many of my favorite things. The beautiful quilt is amazing and I will use it for years to come. Thank you, again, for such a special day!

Abigail



Please join us for an  
**OPEN HOUSE**

in honor of

*Abigail*

Jefferson High School  
Class of 2024

Saturday, June 8<sup>th</sup> | 4-9 pm  
"Grandpa's Garden"  
5626 Westfalen Way  
Lafayette, IN 47905

## An Ode to Dads

God took the strength of a mountain, the majesty of a tree, the warmth of a summer sun, the calm of a quiet sea.

The generous soul of nature, the comforting arm of night, the wisdom of the ages, the power of the eagle's flight.

The joy of a morning in spring, the faith of a mustard seed, the patience of eternity, the depth of a family need.

Then God combined these qualities, when there was nothing more to add, He knew his masterpiece was complete, and so, he called it ... Dad.

—Author unknown







# Service Opportunities & Community Activities



## International Friendship Program Seeking new hosts for fall 2024

Every spring Purdue International Friendship Program is looking for individuals, couples and families who are willing to help welcome an international student to Purdue and the greater Lafayette area.

Here's a link to information about Purdue's International Friendship Program:

[https://www.purdue.edu/newsroom/purduetoday/releases/2024/Q2/international-friendship-program-seeking-new-hosts-for-fall-2024.html?utm\\_source=sfmcPT&utm\\_medium=email&utm\\_campaign=240528PurdueToday&utm\\_term=International+Friendship+Program+seeking+new+hosts+for+fall+2024&utm\\_id=910202](https://www.purdue.edu/newsroom/purduetoday/releases/2024/Q2/international-friendship-program-seeking-new-hosts-for-fall-2024.html?utm_source=sfmcPT&utm_medium=email&utm_campaign=240528PurdueToday&utm_term=International+Friendship+Program+seeking+new+hosts+for+fall+2024&utm_id=910202)

## Women, Wine (or whatever your preferred beverage) & Feminine Spirituality

You are invited to join us on Sunday, **June 2nd**, from 2:00-4:00 pm at Wildcat Creek Winery for Women, Wine, and Feminine Spirituality. (You do not need to be 21 to go to the winery; they sell soft drinks and wine.) We will discuss the [Book Fierce Women of the Bible and Their Stories of Violence, Mercy, Bravery, Wisdom, Sex, and Salvation by Alice Connor](#). (You can click the link to purchase the book from Amazon.) We will discuss Chapter 3- Ruth: Who Are You Responsible For? You do not need to read the previous chapters to be able to participate. We will be discussing Space is limited at the winery, please get in touch with Missy at [missy@osluth.org](mailto:missy@osluth.org) or 260-402-4477 to let me know if you plan to attend.

\*\*\*\*\*

## Working Mom's Group

You are invited to join us for OSLC's Working Mom's Group on the first Saturday of the month at The Lobby by Grey House from 9:30 -11:00. This casual group meets to support one another as moms and women working outside the home. Our next meeting is on Saturday, June 1<sup>st</sup>. If you have any questions, please contact Missy Schroeder at [missy@osluth.org](mailto:missy@osluth.org) or 260-402-4477.

\*\*\*\*\*

## Centering Prayer Group

Join us every Monday morning for Centering Prayer at OSLC online via zoom from 9:00 – 9:30 am. The zoom link will be sent out on Fridays with the worship zoom link.

\*\*\*\*\*

## Luncheon Lectio Divina- Praying with Scripture

Join us every Wednesday at noon via zoom for Lectio Divina. The zoom link will be sent on Fridays with the worship zoom link.



## Hosts Invited for Fellowship Hour

We all love to gather after church for coffee and fellowship! We are looking for volunteers to make coffee for the fellowship hour. If you would like to bring a snack that would be much appreciated but not necessary. The sign up sheet is in the fellowship hall.

## Times and Locations of Ministry Meetings

**Property** normally meets on the first Sunday of the month, shortly after the 9:00 service ends. The meeting is moved to other Sundays as needed to accommodate the schedules of its members. If you are interested in attending the meetings or joining the property ministry team, please contact Matt Ohland at [ohland@purdue.edu](mailto:ohland@purdue.edu) to be notified of changes in the regular meeting time **Congregational Life** meets in the Fellowship Hall on Servant Sundays. All are welcome! **Faith Formation** meets via zoom to accommodate the schedules of its members. New members are welcome! Contact Missy Schroeder ([missy@osluth.org](mailto:missy@osluth.org)) for more info. **Operations** meets only when there is a need or crisis. If you would like to attend one of the meetings, please email Dick Rahdert and he will notify you of the time and place. **Finance** normally meets on Servant Sunday afternoon via zoom. Meetings are usually suspended during the months of June, July, and August. **Social Justice** meets in the Fellowship Hall on Servant Sunday. All are welcome! **Evangelism** meets on Servant Sundays, usually via zoom. Scott Vana would be happy to send you a zoom invite.



LAFAYETTE  
URBAN  
MINISTRY

Tackling basic  
human needs and  
uplifting the  
people of  
Greater Lafayette.

There are many different opportunities for volunteering, from working one-on-one with a child in Youth Programs to helping out at the 48-bed Emergency Shelter for individuals experiencing homelessness. Some volunteer positions require training, others require only a willing heart and a helping hand. There are opportunities to fit every schedule, from regular long-term commitments such as being an advocate once a week with the Immigration Clinic, Financial Assistance Program or ID Clinic — or doing data entry at the LUM Food Pantries or intake for our shelter guests each weekday — to annual events such as Hunger Hike, LUM Camp, Community Thanksgiving Feast, Turkey Trot 5K Run, Gala of Hope fundraising event or Jubilee Christmas.

If you or your group would like to volunteer with LUM, please email or call for more information ([volunteer@LUMserve.org](mailto:volunteer@LUMserve.org) | 765.423.2691).

Visit the LUM volunteer page on their website to see a complete list of volunteer opportunities: <https://www.lumserve.org/volunteer/>



## Social Justice Continued



### **Your gifts to Lutheran World Relief (in 66 countries and 41 states and territories) and Lutheran Disaster Response (in 51 countries and 34 states and territories) at work in 2023:**

In Pennsylvania your gifts to ELCA World Hunger have helped build the Family Promise House in Brackenridge.

In Nepal Ashok, a freed bonded laborer, with support from donors such as you, has been able to open his own barbershop.

In Bolivia Luz visits an education center which is supported by your gifts to ELCA World Hunger. The center provides children with the resources they need to learn, grow and flourish.

In Zimbabwe gifts to ELCA World Hunger have strengthened the futures of vulnerable youth in many ways. Last year 11 youth received the capital, training and resources they needed to raise 26 goats. The herd has increased to over 40, and is still growing.

In Egypt your generosity to ELCA World Hunger and Lutheran Disaster Response has helped over 47,000 refugees in Cairo access the resources they need to thrive in a new country. The program “changed my life,” says Ayaat, a Sudanese refugee. “They made me feel that I am not alone, that I am part of a community that cares.

Here at OSLC we are collecting menstruation products in person, including pads and tampons of all sizes (but nothing like menstrual cups). **They do need to be single use/disposable, and tampons MUST be in a cardboard applicator; plastic applicators will be rejected by administration.** People can also make financial donations through the offering QR code in the bulletin/church website by selecting 'Prison Personal Care Items'. Funds will be used to purchase menstruation products for the population, there will be no monetary donation made to the prison itself.

*The Social Justice Ministry Team at OSLC welcomes your participation! If you'd like to join the team, look for us in the Fellowship Hall on Servants Sunday (usually the first Sunday of the month).*





## A Message from



Happy Summer from PLM! Even though the students are off on internships and summer jobs, we're already planning and preparing for the fall and welcoming new and returning students. Pastor Kristin will be hitting the road in June for Synod Assembly June 7-9, and then taking a road trip on her way to Chapel Hill, NC for this year's LuMin campus ministry conference. The PLM office will still be open, so feel free to stop in and say hi to Amy!

One thing I'm super excited about this year is being an inviting and welcoming presence at Pride Lafayette's OUTFest in August. In partnership with the Social Justice and Evangelism teams of OSLC, we are sharing a table at the event, as a visible sign that we believe God's love is for everyone. We're looking for volunteers to be at our table for 2-hour shifts during the day. [Please visit this link](#) or scan the QR code to sign up. Any questions, please email Pastor Kristin, [pastor@plm.org](mailto:pastor@plm.org).

PRIDE!

Volunteer at the  
PLM/OSLC table

OUTFest  
August 17



## FAMILY FEAST



Serve protein-packed waffles for a family breakfast on FATHER'S DAY or any special occasion.

### What you need:

- Adult help
- Waffle maker
- Blender
- 1 cup old-fashioned oats
- 1 cup cottage cheese
- 6 eggs
- Cooking spray
- Diced strawberries
- Powdered sugar



### What you do:

1. With adult help, preheat the waffle maker.
2. In the blender, add oats and cottage cheese. Crack eggs in a separate bowl, then add to the blender. Pulse to combine the mixture. Then blend on medium speed for 10 seconds.
3. Coat the waffle maker with cooking spray. Spoon about 1/3 cup batter onto the iron and close.
4. Carefully remove the waffle when it's golden brown. Repeat with remaining batter.
5. Top with strawberries and powdered sugar. Makes about 6 waffles.



## FOLLOWING OUR FATHER'S WILL

Jesus always did his Father's will. What does our heavenly Father desire of us?

Directions: Using the coordinates, circle the corresponding words. Then add those to the blanks below to complete John 6:40, NIV.

### Coordinates

T3, R1, F6, E2, T1, H5, A6, R4, F5, T5, H3, F2, A4, E6

|   | F      | A       | T        | H       | E     | R        |
|---|--------|---------|----------|---------|-------|----------|
| 1 | Father | them    | the      | believe | that  | who      |
| 2 | have   | will    | if       | heart   | to    | live     |
| 3 | perish | whoever | everyone | shall   | shall | give     |
| 4 | God    | eternal | send     | into    | Him   | believes |
| 5 | in     | come    | him      | Son     | rest  | with     |
| 6 | looks  | and     | forever  | Where   | life  | hope     |

"For my Father's will is that \_\_\_\_\_

\_\_\_\_\_

and I will raise them up at the last day." John 6:40, NIV

Answer: everyone who looks to the Son and believes in him shall have eternal life

## JOKES

1. Q: If April showers bring May flowers, what do May flowers bring? A: June bugs.
2. Knock, knock. Who's there? Alpaca. Alpaca who? Alpaca the sunscreen, we're going to the beach!
3. Q: What is a room with no walls? A: A mushroom!
4. Q: What is a frog's favorite summertime treat? A: Hopsicles!
5. Knock, knock. Who's there? Yoo. You who? Yoo hoo! Big summer blow out!

News items for the July *Evangel* are due to the office (info@osluth.org) by 6/24/2023. Please type "Evangel" in the subject line.

### **OSLC Staff**

(765) 743-2931

[www.osluth.org](http://www.osluth.org)

Randy Schroeder, Pastor

Erin Thompson, Office Administrator

Missy Schroeder, Director of Faith Formation

Beth Dana, Julie Huetteman &

Sandra Vana, Musicians

Mike Williams, AV Specialist

### **PLM**

#### **Purdue Lutheran Ministry**

(765) 743-2398

[www.plm.org](http://www.plm.org)

Pastor Kristin Rice

Amy Brown, Office Manager

330 West Fowler Ave

West Lafayette, IN 47906

### **Congregational Officers**

President: Bob Nielsen

Vice President: Ainsley Hargus

Treasurer: John Mills

Financial Secretary: Ted Heise

Secretary: Sandra Vana

### **Congregational Council**

Ron Bahr

Jesse Grogan

Ainsley Hargus

Bob Nielsen

Dick Rahdert

Sandra Vana

Mary McGrath

Andrew Meyer

Eric Munson

### **Ministry Team Contacts**

Altar: Vicki Mills

Care: Sherri Guido, Diane Gray &

Sue Aufderheide

Evangelism: Scott Vana

Faith Formation: Missy Schroeder

Fellowship Events: TBD

Finance: Steve Belter & Carl Behnke

Foundation: Vince Guido

Mutual Ministry: Aaron Johnson

Operations: Dick Rahdert

Property: Matt Ohland

Social Justice: Sandra Vana

Worship & Music: Mark Hermodson

### **Outreach**

Family Promise: Julie Huetteman

LUM Liaison: Pastor Randy Schroeder

PLM Liaison: Ainsley Hargus

*The Evangel*



Our Saviour Lutheran Church  
300 West Fowler Avenue  
West Lafayette, IN 47906