



The Evangel

Our Saviour

Lutheran Church

is a congregation of the Indiana-Kentucky Synod of the Evangelical Lutheran Church in America.

We welcome all to share in life with Christ as a community of faith in mission.

OSLC's Vision & Mission

God calls us to be a community of discipleship for all, making Christ's love real in our daily lives.

Grow in faith and Christian calling
Love and serve God and neighbor
Proclaim the Gospel of Jesus Christ

Worship on Sundays

10:00 A.M. TRADITIONAL (Online and in-person)

Join the Zoom Meeting or watch live on OSLC's Facebook page.

Email OSLC (info@osluth.org) and you will receive a bulletin and a Zoom invite.



Randy Schroeder, Pastor
Kristin Rice, Campus Pastor



New Members and Godly Play June 2024





Pastor's Letter



This is anything but Ordinary!



Grace, Mercy and Peace to you and your family from our Creator, our Savior Jesus Christ, and our Sustainer the Holy Spirit!!

Last month I wrote, we are in the season of Ordinary Time. But 'now' is anything but Ordinary. Maybe we should label this "EXTRAordinary" time. ☺ During Ordinary Time, the church focuses on: Witnessing to the world, God's work in bringing about God's kingdom, and the meaning of Sunday. This season we find ourselves in a discernment process to welcome the invitation of the Spirit in what God is calling Our Saviour Lutheran Church as we witness to the world, and witness God bringing about God's kingdom.

During worship on June 16th, I mentioned in my sermon that a developer, Shane O'Malley reached out to OSLC and asked if OSLC had ever considered building a parking garage with apartments above it on our property or some other type of structure. I wish to give you some more information.

Earlier in the month, Bob Nielsen, (Council President) Ainsley Hargus (Council VP), Steve Belter (Financial Team Co-Chair), Carl Behnke (Financial Team Co-Chair) and I sat down with Shane to discuss options for developing our parking lot/ property. **This meeting was only for information gathering.** *OSLC will not make any decisions until our discernment process gives us a clearer path of what to do.*

One option that Shane provided was to lease the property to him, (or another developer). OSLC would retain ownership of the property, yet receive a monthly lease payment for the use of the property. The developer would then pay for any structure built on OSLC owned property. This means, as I understand it, OSLC would not accrue excessive debt and the developer would pay for the development. Of course, this brings with it many questions about who has control over what goes into this new space. We need to explore this much more by speaking with attorneys or others advocates who know about such things, if ... IF... we (OSLC) choose to go this direction. Yet, Shane was very open to ideas about creating commercial space, and/or new space for PLM, and/or apartments for married students or graduate students, and/or adequate space for Child Care (if we would like to provide that for the community) and others.

At this time, we are listening, talking, and gathering information as it is part of our Waiting, Watching and Working together as the body of Christ. Imagine if we find the correct developer and create the best possible outcome for OSLC, PLM and the community around us that would allow us to witness to God's great love in the world and bring about God's Kingdom, even in a small way.

Keep dreaming and asking questions. Keep discerning what God is calling OSLC to do (or be) in West Lafayette. And keep praying! We will find our way because the Holy Spirit is leading us. As ideas are brought up, I will bring them to you. And I hope you will bring your ideas to us. We are in the season of "EXTRAordinary" time indeed.

Thank you for your partnership in ministry. You are a blessing from God, a blessing to OSLC, PLM and to me.

Peace,
Pastor Randy ☺



PASTOR'S SCHEDULE

Wabash Pastoral Leadership Program:

August 5-7
October 4-16
(in Ghana)
December 2-4

Vacation:
June 24-July 9

Council Highlights

- **Property:** Fire alarm/smoke alarm system is being repaired and tested. HVAC repair for AC in office completed. Security changes still ongoing. Next, planning for summer is to clear out/shred outdated records and work on identify which bulletins are electronic copies, so can dispose of paper copies older than a year or so.
- **Social Justice:** Begin collecting items for school kits on July 14th.
- **Finance:** Servant Sunday for September will be on Sept. 8th due to Sunday, September 1st, is Labor Day weekend.

Stewardship

Budgeting at OSLC

In these times of inflation, accurate budgeting is more important than ever. During last month's meeting, your finance team reviewed budgeting milestones and decided members might appreciate a "behind the scenes" look at the operating and budgeting process.

Monthly, the finance team reviews your generous donations and compares them with expenses. In doing so, we also compare them with estimates approved last January – the budget. The congregation approved the 2024 budget knowing that it was ambitious, with a projected \$47,951 deficit; however, the congregation also understood that, historically, our budget was built on conservative donation estimates coupled with aggressive expense estimates. Data that goes back to 1997 shows that our average actual financial performance yielded a \$285.40 surplus (14 surplus years and 13 deficit years). It is a pleasure to report that as of May, donations are \$10,242 ahead of expectations, while expenses are \$22,251 less than expected – we are in good shape as we progress through the slower summer months. Furthermore, the Capital Campaign, which runs until July 2025, has received \$176,422.25 out of pledges totaling \$181,140. This congregation deserves a round of applause for its faithful service to OSLC!

Planning for 2025 has begun. Stewardship materials are being assembled and in August an email will go out to all team leaders seeking budget estimates and employee evaluations. We need those recommendations back by September, when the finance team prepares initial expense estimates. Also in September, all members will receive a stewardship packet including a look back at 2024, Time and Talent sheets, pledge cards and the initial budget proposal.

Commitment Sunday usually falls in October. Your pledges, which are known only to the Financial Secretary (Ted Heise), are aggregated with historical data on other sources of income, such as parking and non-member contributions, to give us a more accurate sense of the coming year's projected donation income.

In December, the team takes a hard look at the current (2024) year's performance. If possible, we move forward on Tier 2 expenses or alternatively, look to our reserves to cover any shortfalls. At this point we have three pieces of critical information – 2025 estimated expenses, expected contributions, and 2024 actuals. With this information, next year's budget is refined and submitted to the Council for approval and inclusion in the Annual report.

OSLC has a loyal congregation that truly believes in our mission and cares for the membership. Thank you for your support – past, present and future!



Faith Formation July News



As we prepare to celebrate the 4th of July, I am anxious about what is in store for our nation. I can physically feel the tension between people as they “stand their ground” on their side of the issue. It feels like a storm is welling up, and we will be swept away by anger, hate, division, and making each other enemies instead of fellow citizens, friends, and families. I wonder where God is in all of this. Doesn't God see we are perishing?

I was blessed that the lectionary reading for Sunday, June 23rd, was Mark 4:35-41, which we used for Luncheon Lectio the Wednesday before. Below is the portion of this scripture we used:

Mark 4:34-36

And leaving the crowd behind, they took him with them in the boat, ... A great windstorm arose, and the waves beat into the boat, so that the boat was already being swamped.

But he was in the stern, asleep on the cushion; and they woke him up and said to him, "Teacher, do you not care that we are perishing?" He woke up and rebuked the wind, and said to the sea, "Peace! Be still!" Then the wind ceased, and there was a dead calm.

He said to them, "Why are you afraid? Have you still no faith?"



Facebook—"Like" OSLC's page for Sunday Worship streamed live, updates and upcoming events:
<https://www.facebook.com/osluth/>



As I sat and prayed with this scripture, the words that shimmered for me were, “Why are you afraid? Have you still no faith?” Pastor Randy informed us that the word faith in this text could also be translated as trust. These words echoed in my head: “Have you still no trust?”

It made me ponder who and what I put my trust in. Especially in light of all the turmoil and polarization we are experiencing now. The disciples lived, ate, and witnessed Jesus' power and teaching, and they still struggled with trust. This thought made me feel a little less ashamed of my lack of trust. Yet this is why I need to spend time reading and praying with scripture. It helps reorient me when I feel anxious or I have lost my way. Stories are the most powerful way of

changing people's hearts and minds. Revisiting the stories of God and God's people ground me in God's love and trust in me. Therefore, I can love and trust in God and love what God loves. What are the stories that ground you when you are feeling anxious and overwhelmed? What helps you be reminded of the faith/trust we have in God? What a gift we have in scripture, and we are so blessed to be held by the one who calms the wind and the seas and even our hearts. Amen



Faith Formation July News Continued



Aviator's Baseball Game Outing

Join us on **July 21st at 3:00 p.m.** for a fun afternoon of fellowship and baseball. We have reserved seating at Loeb Stadium in section 108. Tickets are \$8.00 a piece. OSLC will provide a \$5.00 food voucher with each ticket purchased. Make checks out to OSLC, and in the memo line, write Aviators Baseball. You can place your checks in the offering plate or give them to Erin in the office. **Because the seats are reserved, an RSVP is required.** Please **RSVP (no deadline)** to guarantee a spot with your OSLC family. You can scan the QR code, click this link, [Aviators Baseball Outing](#), or sign up on the sheet outside the office. Please let Missy know if you have any questions at missy@osluth.org or at 260-402-4477.

Lutheran World Relief School Kits

OSLC's Faith Formation and Social Justice teams will again join together to collect items for Lutheran World Relief School Kits. Last year, we assembled and sent 90 school kits to children worldwide. The need is even greater this year. As we enter July, school supplies will begin to go on sale. This is the perfect time to buy these much-needed items for our school kits. Place items in the designated space near the office in the Narthex. Thank you for your generous support to this worthy cause.

- 70-sheet notebooks of wide- or college-ruled paper, approximately 8" x 10 ½"; no loose-leaf paper
- 30-centimeter ruler, or a ruler with centimeters on one side and inches on the other
- pencil sharpeners
- blunt scissors (safety scissors with embedded steel blades work well)
- unsharpened #2 pencils with erasers; secure together with a rubber band
- black or blue ballpoint pens (no gel ink)
- box of 16 or 24 crayons
- 2 ½" eraser



Prophet's Town State Park Outing

On August 11th, you are invited to join us for a fun afternoon at Prophet's Town State Park. We will caravan from the church after the service. We will begin at the farmhouse and barns for a tour, then find a place to have a picnic lunch and end our time at the aquatic center. The cost to get into the park is \$8 a vehicle. Please pack picnic lunches for your group. OSLC will cover the cost of our group getting into the aquatic center. Click the Prophet's Town Sign-Up link or scan the QR code to sign up.

If you have any questions, please contact Missy at missy@osluth.org or 260-402-4477.





Sunday	Monday	Tuesday	Wednesday	Thursday	Friday	Saturday
	1	2	3	4	5	6
	No Centering Prayer 	6 PM Pax	No Luncheon Lectio	7 PM AA  OSLC Office Closed		8:30 AM Men's Breakfast @ Café Literato
	Pastor Randy on Vacation.					
7	8	9	10	11	12	13
10 AM Worship in-person & Zoom	No Centering Prayer	6 PM Pax	12pm Luncheon Lectio via zoom	7 PM AA		
Pastor Randy on Vacation.						
14	15	16	17	18	19	20
10:00 AM Worship in-person & Zoom 2 PM Women Wine & Feminine Spirituality @ Wildcat Creek	9 AM Centering Prayer via zoom 6:30pm OSLC Council Meeting via Zoom	6 PM Pax	12pm Luncheon Lectio via zoom	7 PM AA		
21	22	23	24	25	26	27
10 AM Worship in-person & Zoom 3 PM OSLC Aviator's Baseball Game Outing @ Loeb Stadium	9 AM Centering Prayer via zoom	6 PM Pax	12pm Luncheon Lectio via zoom	7 PM AA		
28	29	30	31			
10 AM Worship in-person & Zoom	9 AM Centering Prayer via zoom	6 PM Pax	12pm Luncheon Lectio via zoom			

Dates OSLC Closed in 2024

- July 4: Fourth of July
- September 2: Labor Day
- November 28 and 29: Thanksgiving
- December 24 and 25: Christmas
- December 31 and January 1 (2025): New Years

10 AM Worship Assistant Schedule for July

Date	Cantor	Assisting Minister	Lector	Usher	Assistant to Mike Williams
July 7	Kathy Heise	Mark Hermodson	Dick Rahdert		Matt Ohland
July 14	Mark Hermodson	Kathy Grogan	Marcia Daehler	Jesse Grogan	Matt Ohland
July 21	Russ Hillberry	Dick Rahdert	Mary L.		Matt Ohland
July 28	Scott Vana	Bob Nielsen	Kathy Grogan	Jesse Grogan	Matt Ohland

Preparation for Worship

“O beautiful for spacious skies, for amber waves of grain” (Katherine Lee Bates). God, thank you for bright summer skies, crops growing to feed the world and your countless other gifts.

* * *

“The earth is the Lord’s, and everything in it, the world, and all who live in it” (Psalm 24:1, NIV). May all who gather here today rejoice in your goodness, O Lord!

* * *

Shepherd-Lord, in summer I easily sense you with me in green spaces and beside still waters. Help me also feel you near when life takes me through dark valleys. (See Psalm 23.)

* * *

Spirit of life, draw each of us into your love, that we may welcome it for ourselves and eagerly share it with others. Amen.

Words of Welcome

As a family of faith, we come to rest in Jesus’ presence, sing God’s praises and be strengthened by the Holy Spirit, our Counselor. Welcome!

* * *

Welcome to worship. “Blessed be the God and Father of our Lord Jesus Christ, who has blessed us in Christ ... according to the riches of his grace” (Ephesians 1:3, 7, NRSV). Amen.

* * *

Good morning [evening]! In the name of the God of creation, Jesus our Savior and the Holy Spirit who guides our ways, welcome to worship.

* * *

On one day Jesus fed a crowd with a few loaves and fish, then calmed both a storm and his disciples (John 6:1-21). He is also with you always — whatever your needs and cares. Welcome to worship.



Dear ones,

The Evangelical Lutheran Church in America is part of a global communion, the [Lutheran World Federation](#) (LWF). Together, 150 member churches in the Lutheran tradition are “living and working together for a just, peaceful, and reconciled world.”

In April the North America region and the Latin America and the Caribbean region gathered for the annual [Leadership Conference of the Americas](#) (COL) under the theme “Do Not Be Afraid! There Is Good News!” Together we explored our fears, worries, inspirations and hopes. Though there were particulars from our different contexts, we shared much in common.

We also acknowledged that the common concerns of the Americas are felt across the communion too. In particular the COL uplifted its solidarity with the Evangelical Lutheran Church in Jordan and the Holy Land, calling for a ceasefire and for access to humanitarian aid for all in need.

This year’s conference was hosted by the [Evangelical Church of the Lutheran Confession in Brazil](#), celebrating 200 years of Lutheran presence. Within days of our visit, [floods](#) devastated southern Brazil, deeply impacting the lives of people and ministries we had quickly come to see as part of ourselves.

We are reminded that the body of Christ rejoices and suffers together, and that the work and witness of the LWF keeps us connected and responsive, even when we are apart. All this is an occasion to affirm our call [to be messengers of peace and hope](#) — to and with each other.

In partnership,

Kathryn M. Lohre

Executive, Ecumenical and Inter-Religious Relations & Theological Discernment



Participants of the Leadership Conference of the Americas (COL) in São Leopoldo, Brazil, 15-19 April 2024.
Photo: LWF/Gabriela Giese



Meet Our Bishop-elect: Rev. Tim Graham



After graduating from Wartburg Theological Seminary in 2007, I received a dual call. The first and primary call was as a redevelopment pastor to Grace Lutheran Church/Light of the Cross (LOTC) in Fort Wayne -- the same church my father was called to in 1976 – and the second call was to Messiah Lutheran Church as an Associate Pastor.

We built some meaningful community at LOTC. However, sadly, we celebrated the holy closure of LOTC at the end of 2009.

In March 2010, Messiah called me to serve full-time as the Youth and Family Pastor. In 2014, I was called as the Interim Senior Pastor, and then in May 2015, I was unanimously called to Messiah as the Senior Pastor.

Some highlights from 17 years at Messiah include:

- An amazing staff and church leadership that fully supported me several international, domestic, and local mission trips with our youth and one international trip with a couples' group.
- The restructuring of our governance to an “Accountability Model.”
- Transitioned preschool to childcare with infant care.
- A \$2.3 million Capital and Building Renovation campaign without any debt.
- A new culture focusing on hospitality to the stranger where “Everyone means anyone, and anyone means everyone.”

I was adopted in Iowa as an infant, and named Timothy Mark Graham by my father and mother, the late Rev. Vernon Graham and Ellen Graham, while they were at Wartburg Theological Seminary. I have three sisters, Dawn (Tom) Starks, Kristina Alderdice (deceased, 2016), and Melissa (Stacy) Curry and several nieces and nephews.

My wife Meme (Michelle) and I met in high school and were married in January 1992. We have four adult children – Sashelle Rose and fiancé Alex Knight, Timothy Graham Jr., Larraine Graham and husband (Cody) Williamson, and Robert Graham – and they all reside in Fort Wayne. We also have seven grandchildren – Jaylen, Maleyah, Michelle, Noelle, Elias, Graham, and Greyson.

Meme and I love traveling, especially to beaches! Our favorite place is the Dominican Republic, and Hilton Head Island is a close second! I also enjoy watching movies (big Marvel fan), smoking BBQ, and reading thriller mystery novels. And I love an array of music. My favorite artists include Luther Vandross, Elvis Presley, Marvin Gaye, and Christopher Cross.

Rev. Tim Graham
Bishop-elect, IN-KY Synod





Global Refuge

Welcoming Newcomers Since 1939

News and Updates

Take Action

This World Refugee Day, Global Refuge joins people across the globe to celebrate the strength and resilience of refugees. It is time to reaffirm our commitment to being a welcoming nation. **Join us in advocating for newcomers.** Contact your Representatives and Senators today.

Across the country, our colleagues, partners and affiliates are in **desperate need of volunteers.** You and your faith community group can live out your call to welcome by partnering with a local resettlement agency to provide support to a family entering the United States. This could include home set-up, transportation, meals, and local guidance – but most importantly, being a welcoming friend. Become a Circle of Welcome.

Featured Partner

Our friends at Border Servant Corps recently hosted a wonderful group of young adults from across the country for our Young Adult Border Immersion in partnership with ELCA Young Adults, AMMPARO and ELCA Advocacy. It was an incredible week of learning, growing and community building in the borderlands. Now, **Border Servant Corps needs our help.**

Unless the Federal Emergency Management Agency (FEMA) addresses transition issues with grant funding, Border Servant Corps will be forced to close the two largest 24/7 migrant shelters in El Paso and southern New Mexico, the only Port Reception Site for all CBP One process migrants in the El Paso Sector, and the only Airport Reception Team in the region. Urge CBP, FEMA, and the EFSP National Board to provide an extension to allow for the full expenditure of awarded funding

"As long as there are people in need of a warm welcome, we'll be here to help them find firm footing."

From the very beginning, we've been an organization of help. During World War II, the first iteration of Global Refuge (the National Lutheran Council) provided assistance and services for refugees from Germany and Eastern Europe. In the decades since, we've been building on that work by expanding our reach and resources for people in search of new beginnings around the world.

There have been many crises that have forced our global neighbors to leave their homes. From help for Hungarians to the crisis in Cuba, conflicts in Uganda, Vietnam, The Balkans, Afghanistan, Iraq, and more — we've been collaborating to provide a safe haven for individuals and families.

Today, our commitment to humanity endures with open arms, open hearts, and open doors. We're continuing to facilitate new beginnings with economic empowerment, mental health services, and family reunification.



Service Opportunities & Community Activities



International Friendship Program Seeking new hosts for fall 2024

Every spring Purdue International Friendship Program is looking for individuals, couples and families who are willing to help welcome an international student to Purdue and the greater Lafayette area.

Here's a link to information about Purdue's International Friendship Program:

https://www.purdue.edu/newsroom/purduetoday/releases/2024/Q2/international-friendship-program-seeking-new-hosts-for-fall-2024.html?utm_source=sfmcPT&utm_medium=email&utm_campaign=240528PurdueToday&utm_term=International+Friendship+Program+seeking+new+hosts+for+fall+2024&utm_id=910202

Women, Wine (or whatever your preferred beverage) & Feminine Spirituality

You are invited to join us on Sunday **July 14th**, from 2:00-4:00 pm at Wildcat Creek Winery for Women, Wine, and Feminine Spirituality. (You do not need to be 21 to go to the winery; they sell soft drinks and wine.) We will discuss the Book Fierce Women of the Bible and Their Stories of Violence, Mercy, Bravery, Wisdom, Sex, and Salvation by Alice Connor. (You can click the link to purchase the book from Amazon.) We will discuss Chapter 4– Mary Theotokos-More than Meets the Eye. You do not need to read the previous chapters to be able to participate. Space is limited at the winery, please get in touch with Missy at missy@osluth.org or 260-402-4477 to let me know if you plan to attend.

Working Mom's Group

You are invited to join us for OSLC's Working Mom's Group on the first Saturday of the month at The Lobby by Grey House from 9:30 -11:00. ***We will not meet in July because of the holiday and Missy's vacation.*** Our next meeting is on **Saturday, August 3rd**, at Java House located at 4729 Meijer Ct., Lafayette, IN 47905. This casual group meets to support one another as moms and women working outside the home. If you have any questions, please get in touch with Missy Schroeder at missy@osluth.org or 260-402-4477.

Centering Prayer Group

Join us every Monday morning for Centering Prayer at OSLC online via zoom from 9:00 – 9:30 am. The zoom link will be sent out on Fridays with the worship zoom link.

Luncheon Lectio Divina- Praying with Scripture

Join us every Wednesday at noon via zoom for Lectio Divina. The zoom link will be sent on Fridays with the worship zoom link.



Hosts Invited for Fellowship Hour

We all love to gather after church for coffee and fellowship! We are looking for volunteers to make coffee for the fellowship hour. If you would like to bring a snack that would be much appreciated but not necessary. The sign up sheet is in the fellowship hall.

Times and Locations of Ministry Meetings

Property normally meets on the first Sunday of the month, shortly after the 9:00 service ends. The meeting is moved to other Sundays as needed to accommodate the schedules of its members. If you are interested in attending the meetings or joining the property ministry team, please contact Matt Ohland at ohland@purdue.edu to be notified of changes in the regular meeting time **Congregational Life** meets in the Fellowship Hall on Servant Sundays. All are welcome! **Faith Formation** meets via zoom to accommodate the schedules of its members. New members are welcome! Contact Missy Schroeder (missy@osluth.org) for more info. **Operations** meets only when there is a need or crisis. If you would like to attend one of the meetings, please email Dick Rahdert and he will notify you of the time and place. **Finance** normally meets on Servant Sunday afternoon via zoom. Meetings are usually suspended during the months of June, July, and August. **Social Justice** meets in the Fellowship Hall on Servant Sunday. All are welcome! **Evangelism** meets on Servant Sundays, usually via zoom. Scott Vana would be happy to send you a zoom invite.



A Message from



Happy summer! June was a busy month for me, Pastor Kristin – Synod Assembly and LuMin campus ministry conference, with a road trip vacation in the mix as well. It was a lot of fun meeting PLM alumni and making Purdue connections at Synod Assembly. The LuMin conference was also a really meaningful time with other campus ministry practitioners and learning more about Durham, NC. I was especially excited to reconnect with my own campus pastor from 20+ years ago! How fun that we're now colleagues in this ministry.

It's wild to think that in just six short weeks we'll be welcoming students to campus again, especially all of the new students coming to Purdue for the first time. PLM will be offering a few opportunities during Boiler Gold Rush (August 11-18) to welcome new students, including invitations to join us for worship at OSLC. If you're interested in supporting students in a meaningful way, talk to Pastor Kristin (pastor@plm.org) for some ideas as we continue to work together in this campus ministry and congregational partnership.

And as always, please keep all of the Purdue students, staff, and faculty in your prayers. These summer months have a different rhythm – internships, summer jobs, summer classes, travel, time 'back home' with family and friends. We pray for everyone to be safe where they are and for God's presence to be experienced in comforting ways.

P.S. Stop by the PLM house sometime! We've been busy making some updates and changes to accommodate the ever-changing flow of community. The PLM house is open Monday-Thursday, 9am-3pm, unless otherwise noted.

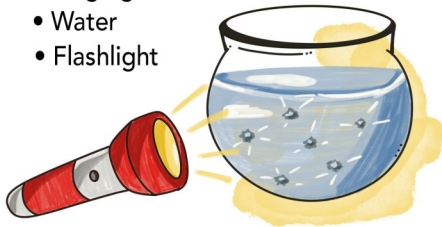
In peace, Pastor Kristin



Why do stars appear to twinkle? Try this experiment to find out!

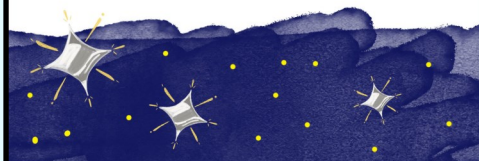
What you need:

- Aluminum foil
- Large glass bowl
- Water
- Flashlight



What you do:

1. Crumple the foil into a ball. Carefully unfold it and lay it flat on the ground.
2. Fill the bowl with water and place it on the foil.
3. Turn off the lights and make the room as dark as possible. Shine the flashlight about 1 foot from the water's undisturbed surface. Light will reflect onto the foil.
4. Then tap your finger on the water's surface. As the water moves, what happens to the light on the foil?
5. This flickering simulates scintillation, which happens when starlight enters Earth's atmosphere. As light passes through layers of gas and water, it refracts and appears to twinkle.



Puzzle!

THE WATER OF LIFE

A cold drink helps us beat the summer heat. Complete this puzzle for a reminder of what Jesus offers to quench our thirst.

A	B	C	D	E	F	G	H	I	J	K	L	M	N	O	P	Q	R	S	T	U	V	W	X	Y	Z
1	2	3	4	5	6	7	8	9	10	11	12	13	14	15	16	17	18	19	20	21	22	23	24	25	26

$$\frac{6}{6} \frac{7}{2} \frac{9}{11} \frac{23}{3} \frac{12}{4} \frac{8}{3} \frac{9}{6} \frac{18}{4} \frac{1}{4} \frac{18}{5} \frac{10}{2} \frac{10}{5}$$

$$\frac{13}{4} \frac{12}{7} \frac{18}{2} \frac{1}{7} \frac{10}{1} \frac{20}{2} \frac{17}{2} \frac{8}{12} \frac{22}{3} \frac{1}{2} \frac{11}{4} \frac{15}{2} \frac{2}{3}$$

$$\frac{0}{1} \frac{7}{7} \frac{9}{5} \frac{5}{7} \frac{8}{3} \frac{7}{13} \frac{5}{15} \frac{11}{3} \frac{4}{1} \frac{12}{3} \frac{5}{9} \frac{16}{11}$$

$$\frac{12}{11} \frac{10}{2} \frac{6}{9} \frac{10}{13} \frac{2}{7} \frac{12}{7} \frac{11}{3} \frac{1}{4} \frac{24}{5} \frac{11}{9} \frac{4}{3} \frac{6}{5} \frac{11}{6}$$

$$\frac{4}{16} \frac{5}{3} \frac{14}{9} \frac{9}{3} \frac{9}{9} \frac{2}{3} \frac{9}{4} \frac{15}{8} \frac{5}{4} \frac{7}{1} \frac{18}{2}$$

$$\frac{9}{6} \frac{10}{4} \frac{27}{7} \frac{4}{4} \frac{8}{3} \frac{18}{5} \frac{8}{7} \frac{6}{14} \frac{4}{1} \frac{13}{5}$$

$$\frac{6}{9} \frac{14}{8} \frac{7}{5} \frac{18}{9} \frac{2}{4} \frac{2}{3}$$

Revelation 22:17, NIV

Answer: "Let the one who is thirsty come, and let the one who wishes take the free gift of the water of life." Revelation 22:17, NIV

JOKES

1. **Q: What's a firework's favorite snack?** A: "Pop"corn!
2. **Q: During the summer, when do you go at red and stop at green?** A: When you're eating a slice of watermelon.
3. **Q: What did the beach say to the wave?** A: Long time, no sea!
4. **Knock, knock! Who's there? S'more. S'more who?** S'more jokes on the way.

News items for the July *Evangel* are due to the office (info@osluth.org) by 7/22/2023. Please type "Evangel" in the subject line.

OSLC Staff

(765) 743-2931

www.osluth.org

Randy Schroeder, Pastor

Erin Thompson, Office Administrator

Missy Schroeder, Director of Faith Formation

Beth Dana, Julie Huetteman &

Sandra Vana, Musicians

Mike Williams, AV Specialist

PLM

Purdue Lutheran Ministry

(765) 743-2398

www.plm.org

Pastor Kristin Rice

Amy Brown, Office Manager

330 West Fowler Ave

West Lafayette, IN 47906

Congregational Officers

President: Bob Nielsen

Vice President: Ainsley Hargus

Treasurer: John Mills

Financial Secretary: Ted Heise

Secretary: Sandra Vana

Congregational Council

Ron Bahr

Jesse Grogan

Ainsley Hargus

Bob Nielsen

Dick Rahdert

Sandra Vana

Mary McGrath

Andrew Meyer

Eric Munson

Ministry Team Contacts

Altar: Vicki Mills

Care: Sherri Guido, Diane Gray &

Sue Aufderheide

Evangelism: Scott Vana

Faith Formation: Missy Schroeder

Fellowship Events: TBD

Finance: Steve Belter & Carl Behnke

Foundation: Vince Guido

Mutual Ministry: Aaron Johnson

Operations: Dick Rahdert

Property: Matt Ohland

Social Justice: Sandra Vana

Stewardship: Pastor Randy Schroeder

Worship & Music: Mark Hermodson

Outreach

Family Promise: Julie Huetteman

LUM Liaison: Pastor Randy Schroeder

PLM Liaison: Ainsley Hargus

The Evangel



Our Saviour Lutheran Church
300 West Fowler Avenue
West Lafayette, IN 47906